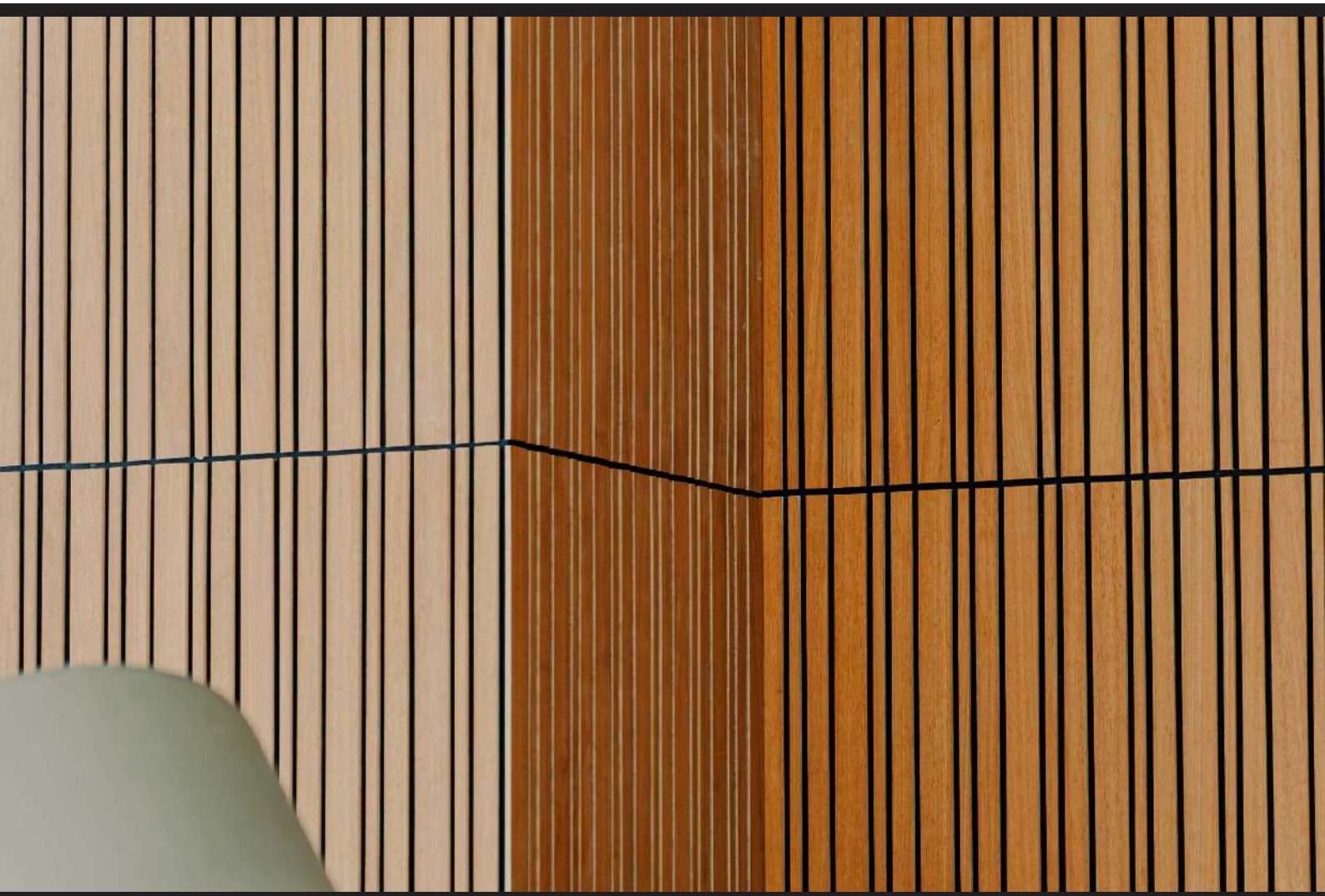


| Soundwall |



IWMI
URBAN
NOISE
CONTROL

SOUNDWALL is a high-performance acoustic panel system featuring decorative wooden slats designed for installation on walls and ceilings. The system combines effective sound absorption with refined architectural aesthetics, making it suitable for a wide range of **residential, commercial, and specialized interior spaces**.

Each panel is manufactured as a **composite acoustic element**, consisting of a 12 mm polyester fiber (PET) acoustic backing combined with 8 mm wooden slats available in MDF, Iroko, or Oak. The panels are supplied as factory pre-assembled units, ensuring consistent quality and easy installation.

Produced in a rectangular modular format, the panels are installed side-by-side to create a continuous, seamless surface on walls or ceilings. **SOUNDWALL** offers an **elegant and visually striking acoustic solution**, improving interior acoustics while remaining cost-effective and practical for modern architectural projects.



TECHNICAL SPECIFICATIONS



INSTALLATION

Installation can be carried out by mechanical fixing or adhesive bonding to walls or ceilings.



SUSTAINABILITY

Panels are manufactured from sustainable materials, with PET felt made from recycled plastic and wood sourced from sustainably managed forests.



NON TOXIC

Wooden slats meet E0 formaldehyde emission standards (desiccator method), ensuring a low-emission and healthier indoor environment.



FLAME RETARDANT

- Polyester Fiber: Class B-s1, d0 (EN 13501-1)
- Wood: Class B-s2, d0 (EN 13501-1)



MOISTURE RESISTANCE

The wooden slats offer high moisture resistance due to the melamine resin content, allowing installation in areas such as kitchens and bathrooms when properly finished.



AVAILABLE SIZES

STANDARD PANEL SIZE

240 × 60 cm

TOTAL THICKNESS

2cm

PANEL TYPES

Type 30-10

Slat Width: 3 cm

Spacing (slat-to-slat): 1 cm

Type 45-15-30

Slat Widths: 4.5 cm & 1.5 cm

Spacing (slat-to-slat): 1 cm

MATERIALS AND COLORS

MATERIALS

Surface Slats: MDF, Iroko, or Oak (8 mm)

Acoustic Backing: PET acoustic panel (12 mm)

SOUNDWALL Plus

Additional acoustic backing: 50 mm mineral wool layer for enhanced sound absorption.

Customization

Panels can be customized in size, finish, and configuration to meet the specific requirements of each project or application.

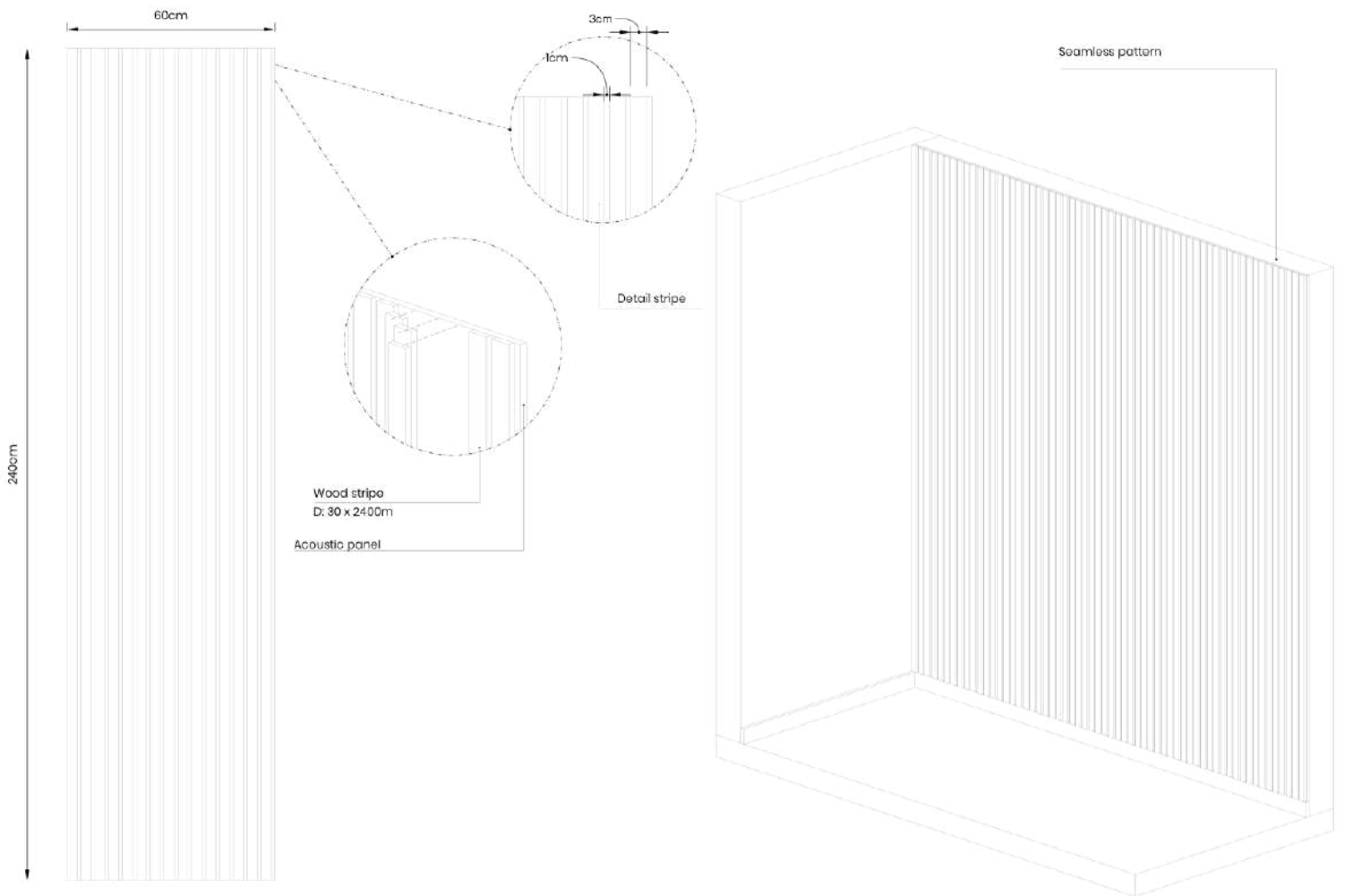
COLORS

As per client and project needs.



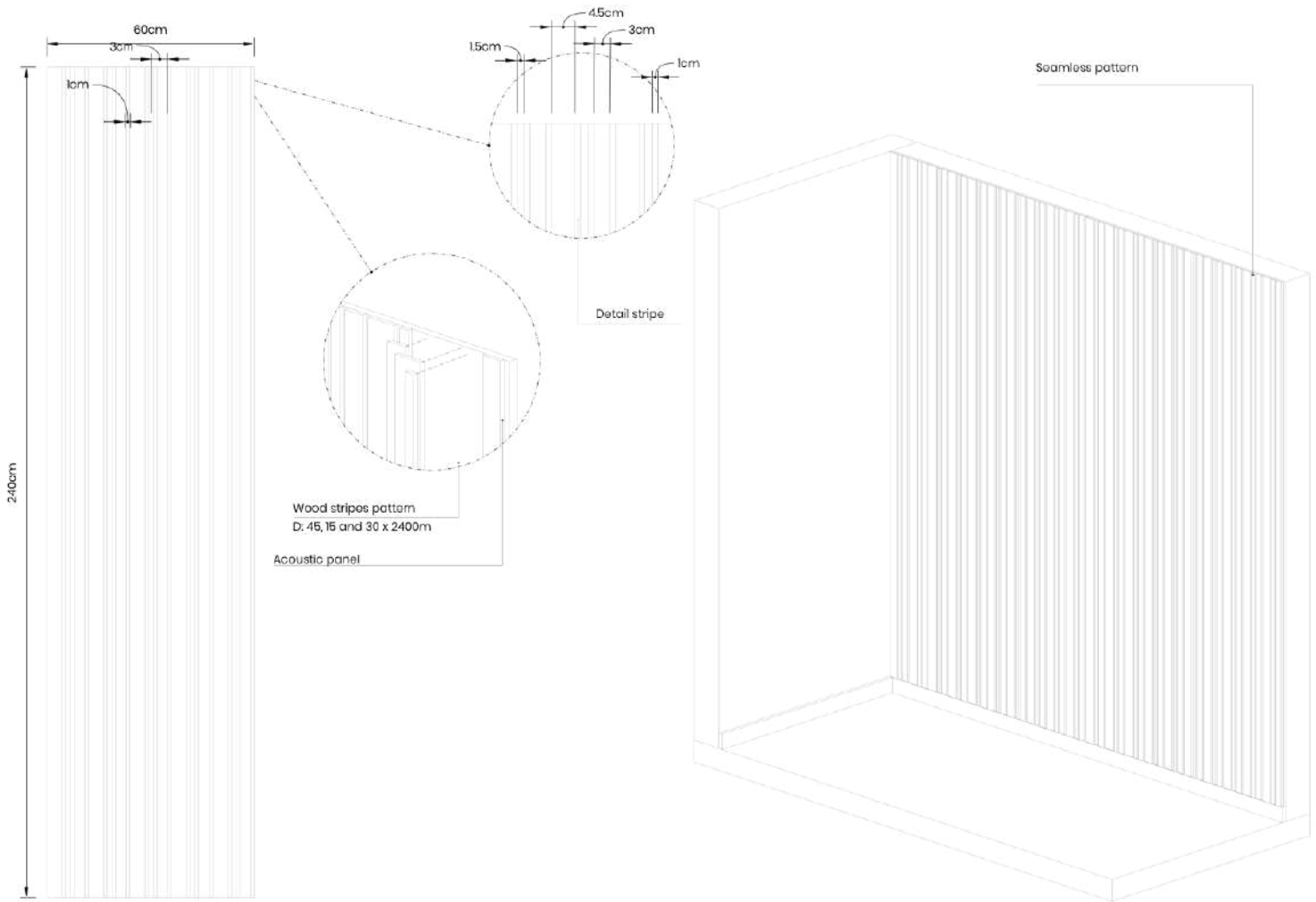
STANDARD DIMENSIONS AND TYPES

SOUNDWALL 30-10



STANDARD DIMENSIONS AND TYPES

SOUNDWALL 30-15-45



SOUND ABSORPTION

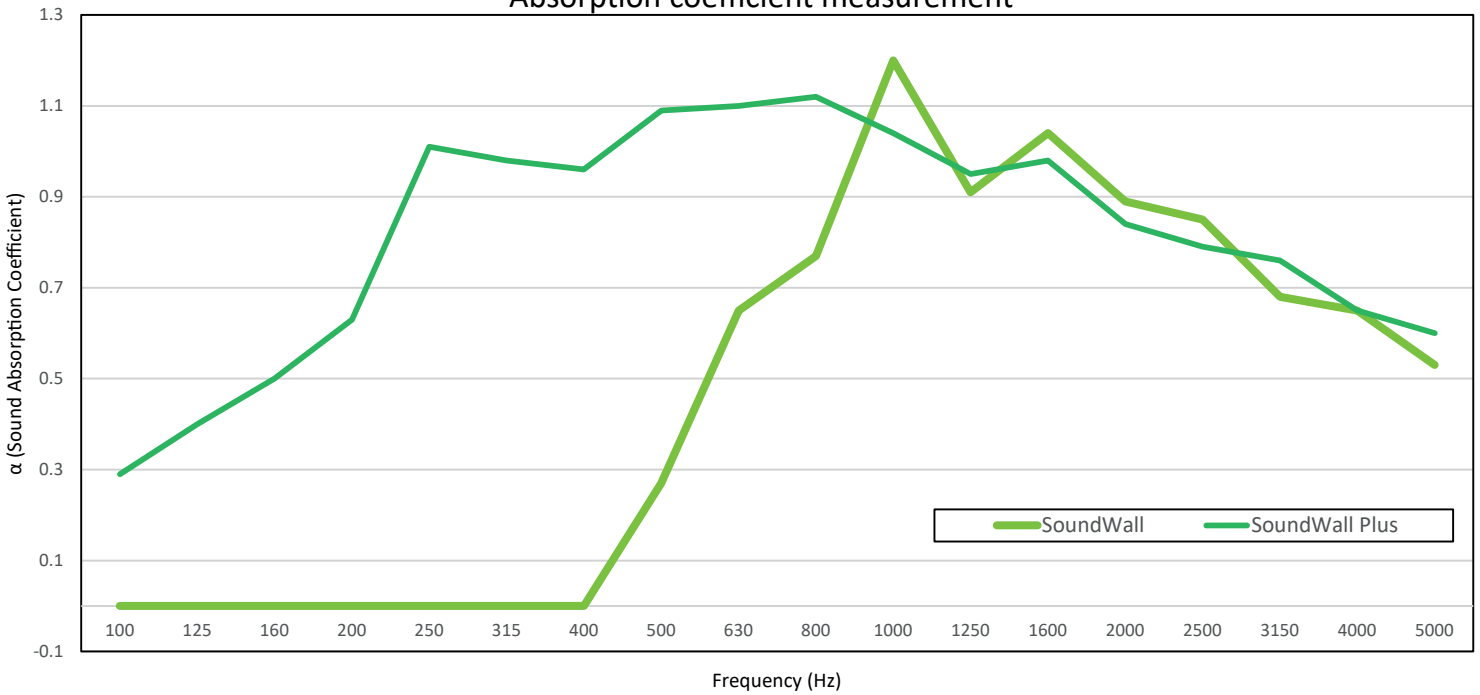
SOUNDWALL

Sound class C ($\alpha_w=0.52$) [according to ISO 354:2003 & ISO 11654:1997]
 (standard total thickness of 20mm)

SOUNDWALL PLUS

Sound class B ($\alpha_w=0.82$) [according to ISO 354:2003 & ISO 11654:1997]
 (with additional backing material of mineral wool 50mm, total thickness 70mm)

Absorption coefficient measurement



Frequency (Hz)	100	125	160	200	250	315	400	500	630	800	1000	1250	1600	2000	2500	3150	4000	5000
Soundwall	0	0	0	0	0	0	0	0.27	0.65	0.77	1.2	0.91	1.04	0.89	0.85	0.68	0.65	0.53
	0			0			0.31			0.96			0.93			0.62		
Soundwall Plus	0.29	0.4	0.5	0.63	1.01	0.98	0.96	1.09	1.1	1.12	1.04	0.95	0.98	0.84	0.79	0.76	0.65	0.6
	0.40			0.87			1.05			1.04			0.87			0.67		

IWM
URBAN
NOISE
CONTROL