

| Twisted |



IWMI
URBAN
NOISE
CONTROL

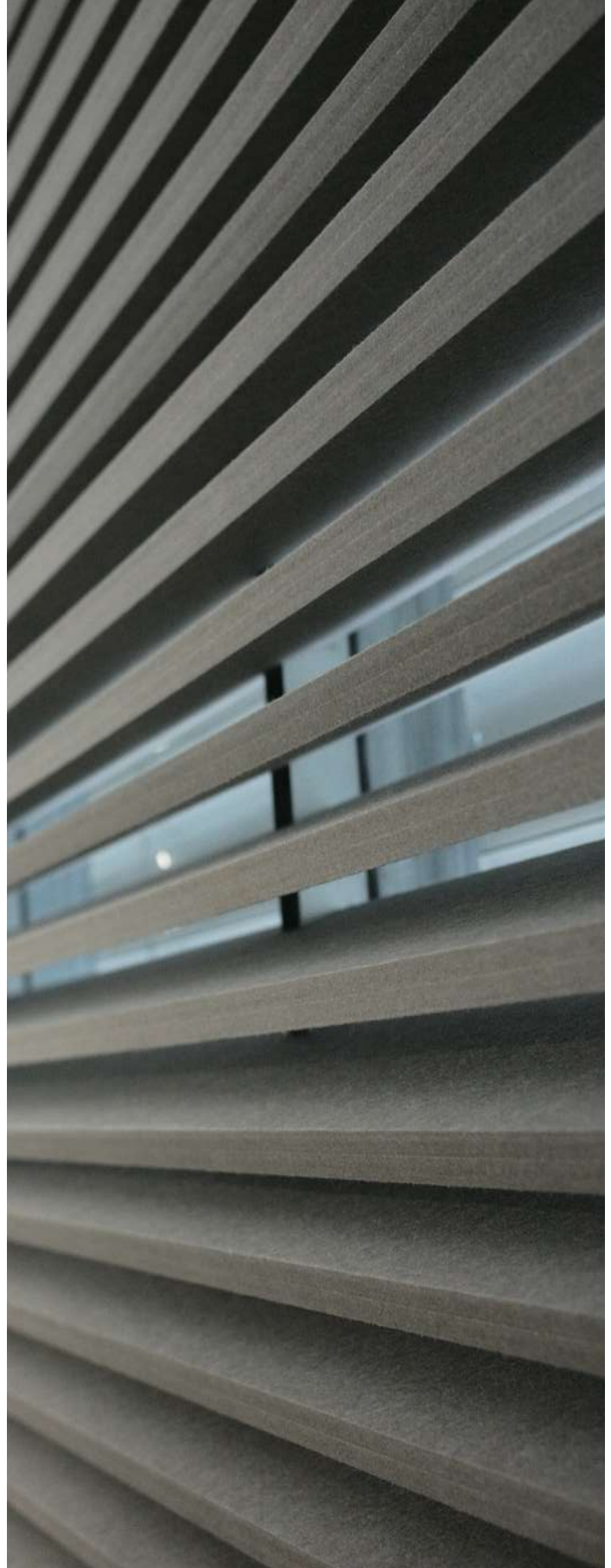
The **M-SYSTEM** is a lightweight modular ceiling system made from recycled PET acoustic panels, designed to provide effective sound absorption while enhancing interior aesthetics.

Suitable for commercial, private, and specialized spaces, the suspended baffle system helps reduce reverberation and improve acoustic comfort in a wide range of environments.

The system can function as a false ceiling and is installed through mechanical fixing or suspended installation using a metal support structure with steel threaded rods, allowing mounting on walls or ceilings depending on the project requirements.

The system also allows seamless integration of building services such as HVAC systems, lighting fixtures, fire sprinklers, and audio equipment.

Combining acoustic performance, sustainable materials, and modern design, the M-SYSTEM offers a cost-effective and visually striking ceiling solution for contemporary interior projects.



TECHNICAL SPECIFICATIONS

**INSTALLATION**

Installation can be carried out by mechanical fixing or suspension using a metal structure, on walls or ceilings.

**SUSTAINABILITY**

Panels manufactured from 100% polyester fibre, containing a minimum of 75% post-consumer recycled PET sourced from recycled plastic bottles.

**NON TOXIC**

Tested according to BS EN 717-1 (E0) for formaldehyde emissions. The panels contain no chemical binders or formaldehyde, supporting safer indoor air quality.

**FLAME RETARDANT**

Panels rated Class B-s1, d0 according to EN 13501-1, offering high fire safety performance for walls and ceilings.

**MAINTENANCE**

Panels can be cleaned easily using a dust broom, vacuum cleaner, or a damp cloth.



AVAILABLE SIZES

MODULE SIZE

193.8 cm x 240 cm

HEIGHT OF BAFFLES

16 cm

HEIGHT OF SYSTEM

17 cm

GAP BETWEEN BAFFLES

4 cm or 9 cm

THICKNESS OF BAFFLES

12 mm or 24 mm

SUPPORT TYPE

Galvanised steel structure

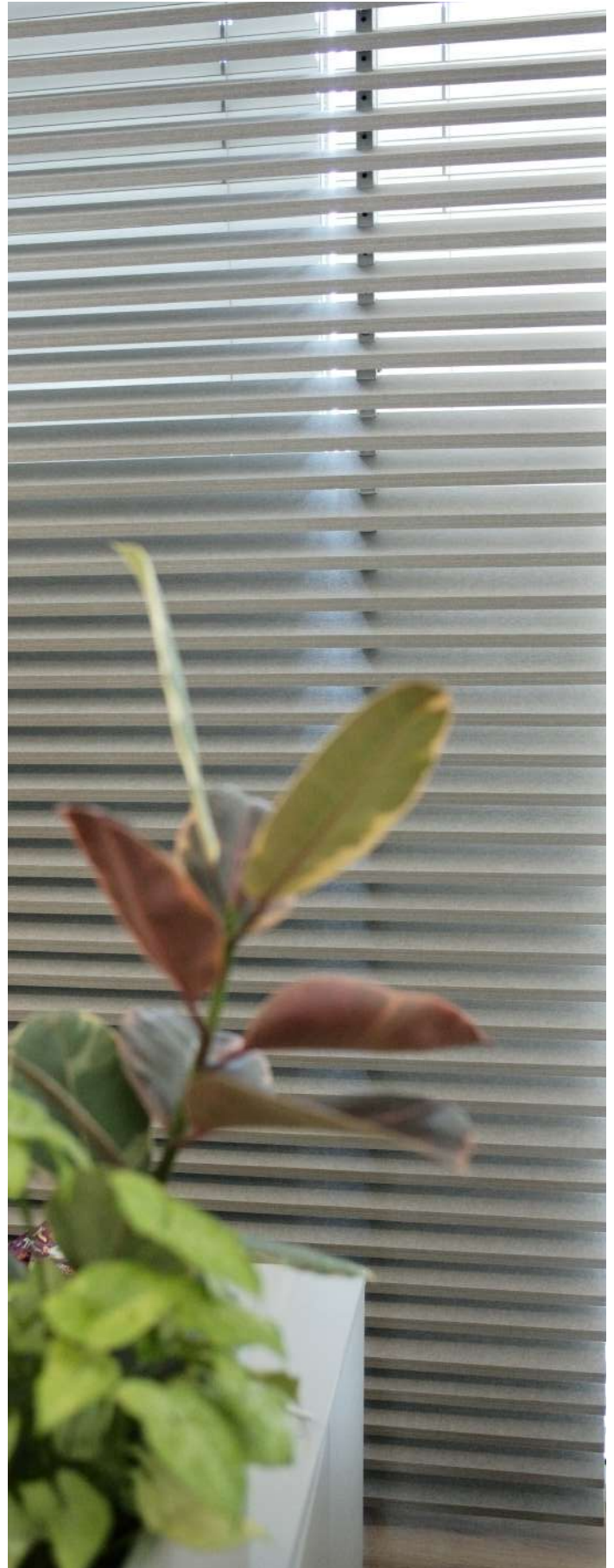
MATERIALS AND COLORS

MATERIALS

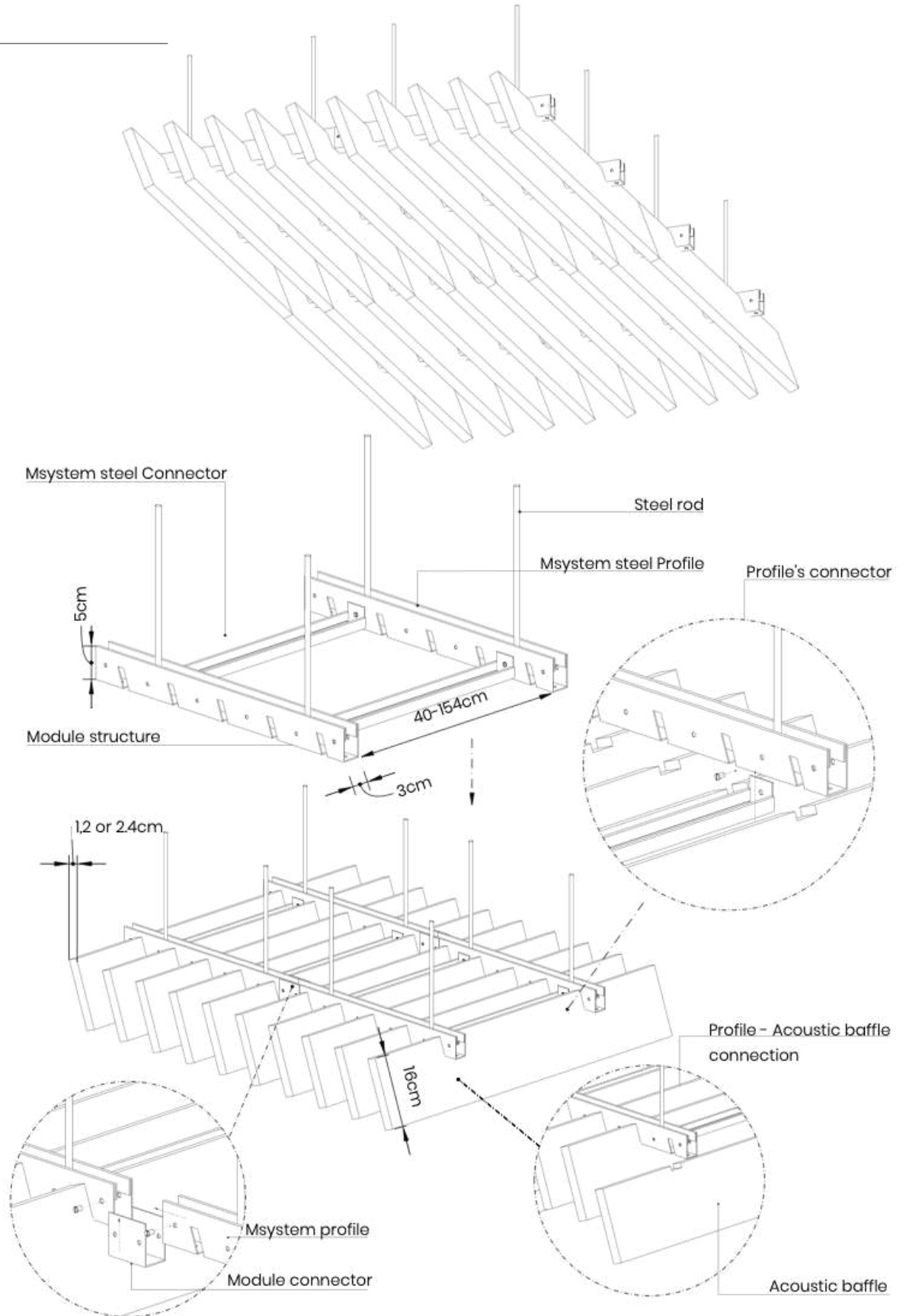
Polyester Fiber: 100% made from recycled PET

COLORS

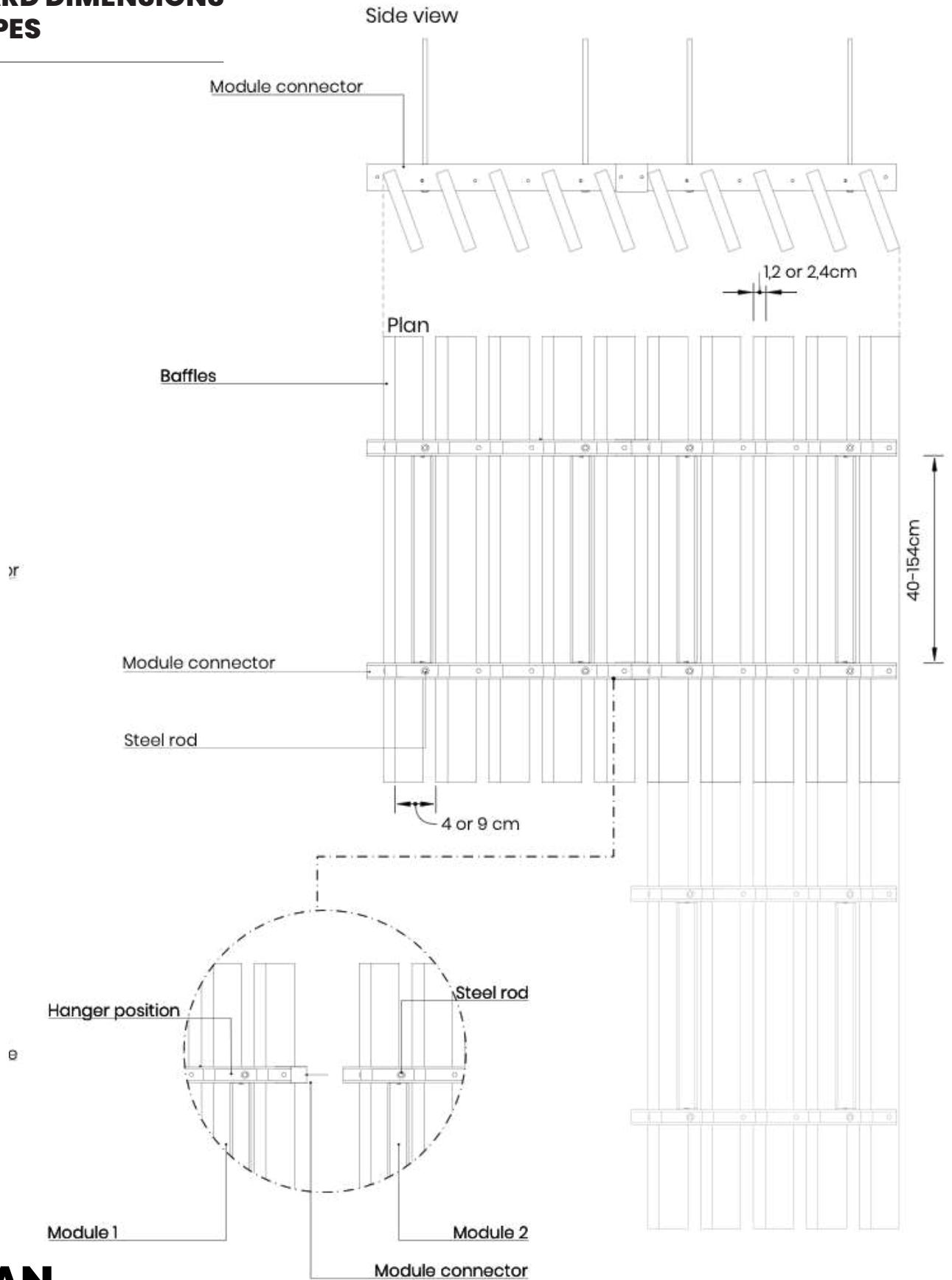
As per client and project needs.



STANDARD DIMENSIONS AND TYPES



STANDARD DIMENSIONS AND TYPES



SOUND ABSORPTION

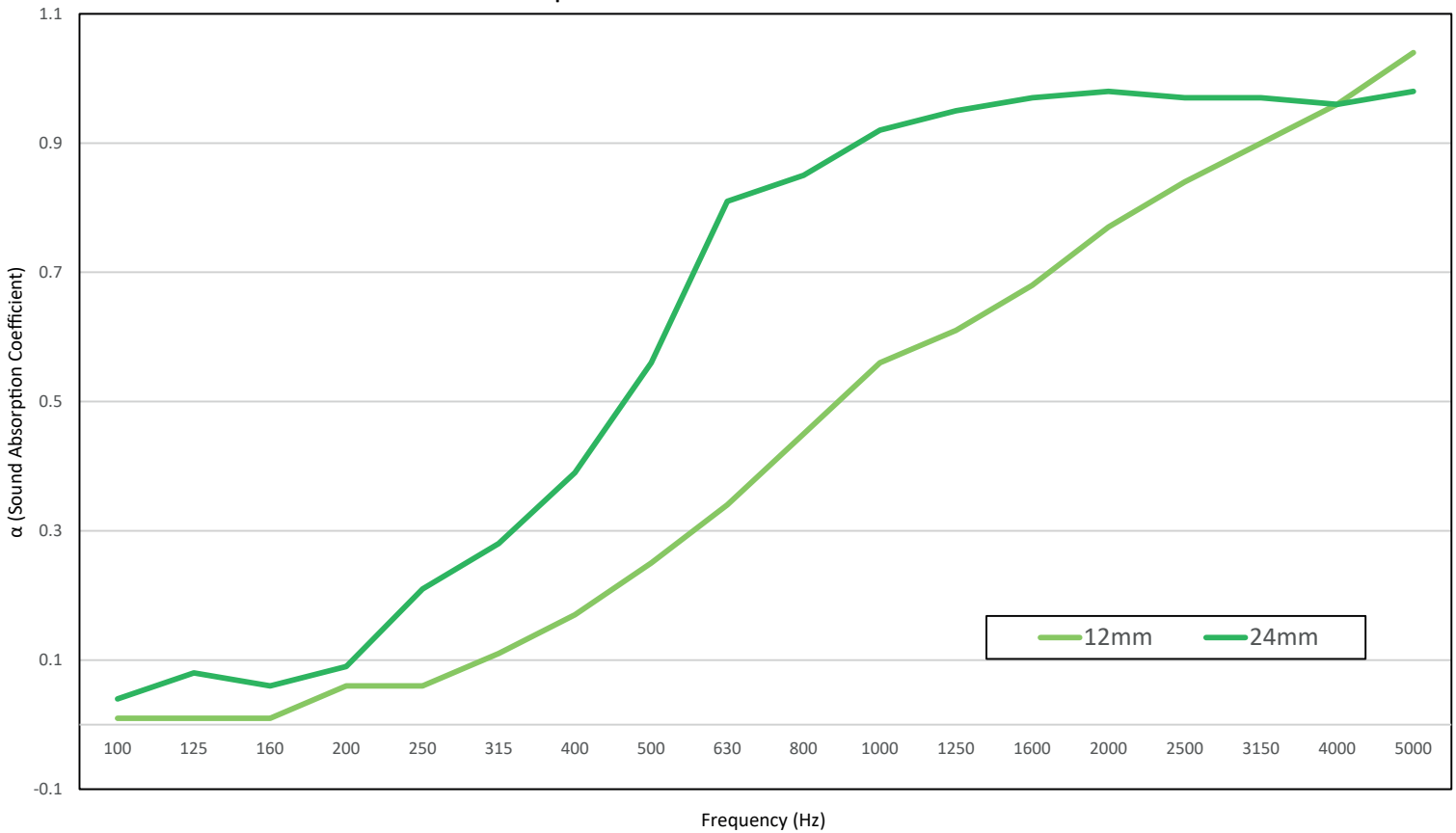
M-SYSTEM TWISTED - 4 cm GAP - MATERIAL 12 mm

Sound class D ($\alpha_w=0.30$) [according to ISO 354:2003 & ISO 11654:1997]

M-SYSTEM TWISTED - 4 cm GAP - MATERIAL 24 mm

Sound class C ($\alpha_w=0.61$) [according to ISO 354:2003 & ISO 11654:1997]

Absorption coefficient measurements



Frequency (Hz)	100	125	160	200	250	315	400	500	630	800	1000	1250	1600	2000	2500	3150	4000	5000
as 12 mm	0.01	0.01	0.01	0.06	0.06	0.11	0.17	0.25	0.34	0.45	0.56	0.61	0.68	0.77	0.84	0.9	0.96	1.04
	0.01			0.08			0.25			0.54			0.76			0.97		
as 24 mm	0.04	0.08	0.06	0.09	0.21	0.28	0.39	0.56	0.81	0.85	0.92	0.95	0.97	0.98	0.97	0.97	0.96	0.98
	0.06			0.19			0.59			0.91			0.97			0.97		

SOUND ABSORPTION

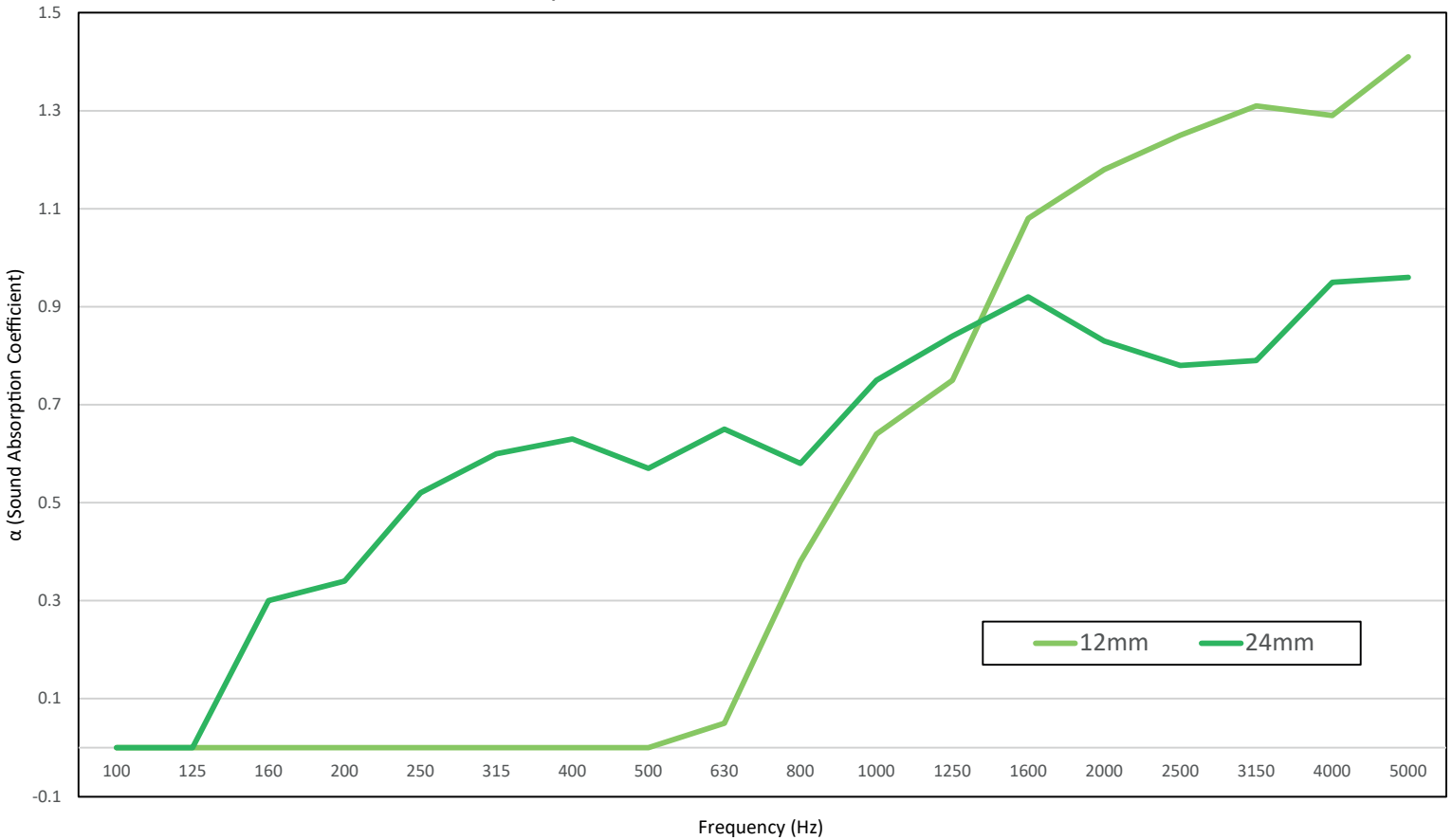
M-SYSTEM TWISTED - 9 cm GAP - 12 mm - TYPE J MOUNTING

Sound class C ($\alpha_w=0.56$) [according to ISO 354:2003]

M-SYSTEM TWISTED - 9 cm GAP - 24 mm - TYPE J MOUNTING

Sound class C ($\alpha_w=0.62$) [according to ISO 354:2003]

Absorption coefficient measurements



Frequency (Hz)	100	125	160	200	250	315	400	500	630	800	1000	1250	1600	2000	2500	3150	4000	5000
as 12 mm	0	0	0	0	0	0	0	0	0.05	0.38	0.64	0.75	1.08	1.18	1.25	1.31	1.29	1.41
	0.00			0.00			0.02			0.59			1.17			1.34		
as 24 mm	0	0	0.3	0.34	0.52	0.6	0.63	0.57	0.65	0.58	0.75	0.84	0.92	0.83	0.78	0.79	0.95	0.96
	0.10			0.49			0.62			0.72			0.84			0.90		

IWM
URBAN
NOISE
CONTROL