



SoundWall

**URBAN
NOISE
CONTROL**

IWMI

UNC is probably the only one company in Cyprus that, along with supply and manufacturing, provides Designing and Installation, from experienced Acoustic Consultants and Installers respectively. Moreover, UNC has acoustic material in stock and the probably only one in Cyprus, brand-new showroom with exclusively acoustic materials and systems.

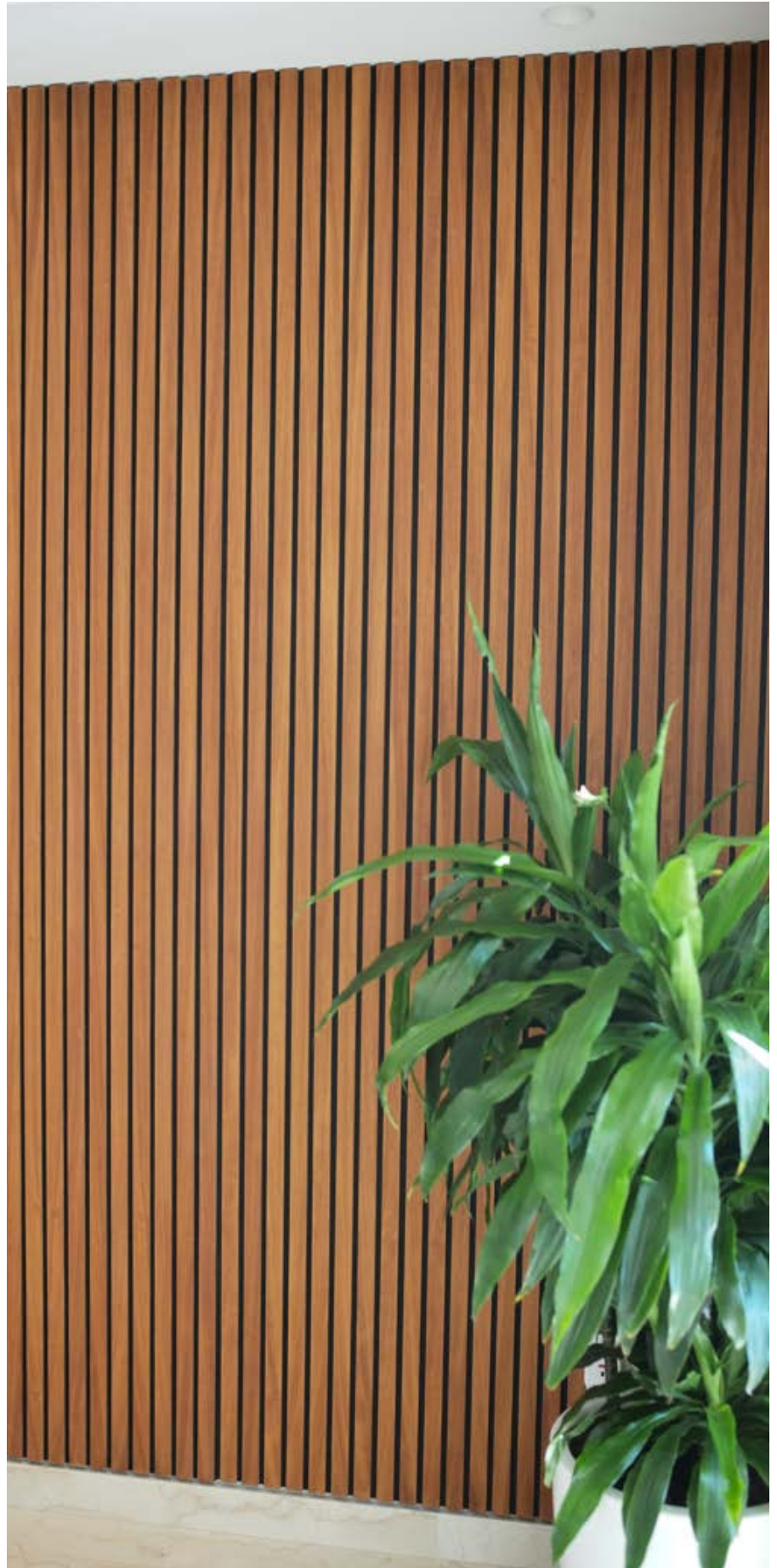
**URBAN
NOISE
CONTROL**

SoundWall

SOUNDWALL is acoustic panel, as wooden slats, which can be placed to ceilings or to walls and provide significant sound absorption and desired aesthetics, within various types (private, special, commercial) of rooms.

The rectangular-shaped panels are being placed one next to each other, without joints in-between, resulting in a seamless-continuous run (finish) of panelling, into walls/ceilings.

The SOUNDWALL is guaranteed to bring a visually eye-catching wallcovering solution to any project, through a cost-effective solution.



DESIGNING AND INSTALLATION

Apart from being suppliers and manufactures, UNC provide Designing and Installation services.

A specialised team of Acoustic Consultants and an experienced team of Acoustic Materials/systems Installers could carry out an end-to-end service for Acoustic treatment.

PRODUCT AVAILABILITY AND SAMPLES

UNC always have stock of the product and samples of each one of it. Feel free to contact us, in order to setting up a meeting in our showroom.



SPECIFICATIONS



MAINTENANCE

It can be cleaned by using a dust broom, a vacuum cleaner or a hard-wrung cloth.



SUSTAINABILITY

Those panels are made from sustainable materials. The felt is made from recycled plastic and the wood from sustainable forestry.



MOISTURE RESISTANT

Wooden material has high moisture resistance due to high melamin content of resin used and so it can be also used in kitchens and bathrooms with the correct finishing.



NON TOXIC

The formaldehyde emission of wooden slats is classified E0 grade (with desiccator method).



FLAME RETARDANT

Polyester Fiber

Class B-s1, d0 [EN-13501-1]

Wood

Class B-s2, d0 [EN-13501-1]

MATERIAL

The panels are manufactured as a combination of polyester fiber (PET) and coloured MDF or Veneered MDF and supplied/installed as pre-assembled panels.

FRONT

OPTION 1:
MDF coloured
or White Oak
or Iroko
or Ash



OPTION 2:
Colour MDF Veneered

Consistent colour distribution from surface to all the way through. Variety of colours as option enable creation, based on client's willing and project requirements.



COLOURS NOTES

*Boards can present colour variations due to the wood's natural changes of tone and to the use of organic dyes only.

*The tone of the surface may get darker with a finishing applied.(varnish, oil, wax)

BACK

100% Polyester Fiber
Board 12mm





STANDARD DIMENSIONS AND TYPES

Size

2400x600mm

Total thickness

20mm

Slat width

30mm

Slat to slat

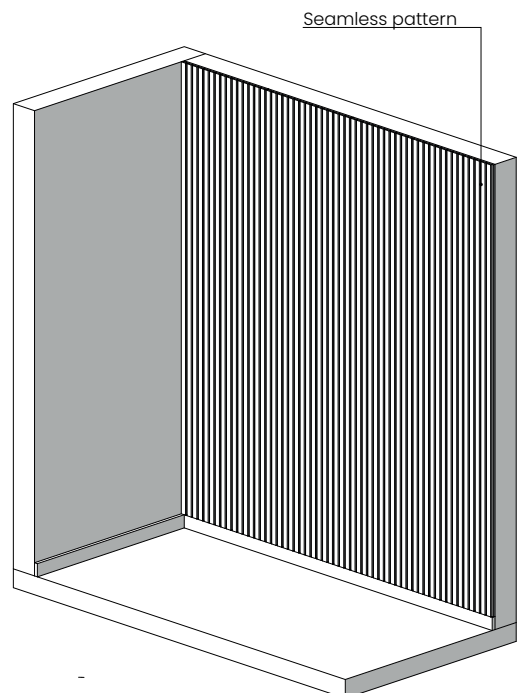
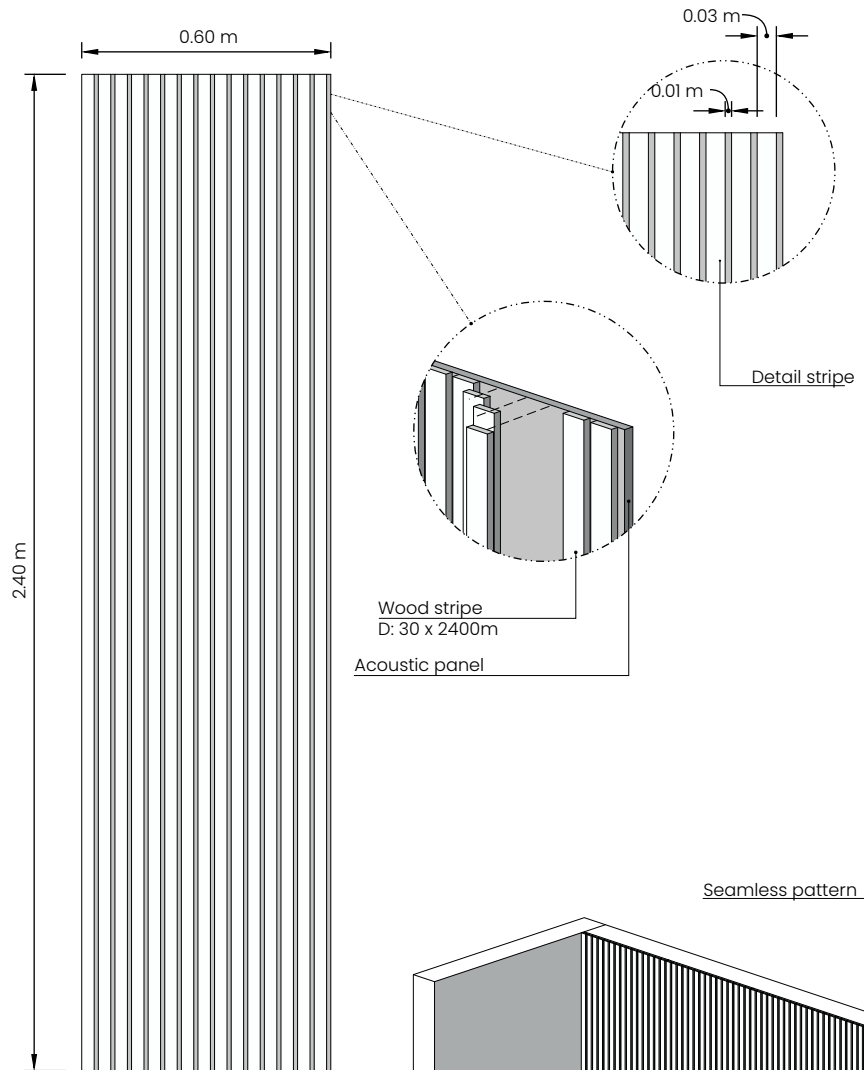
10mm

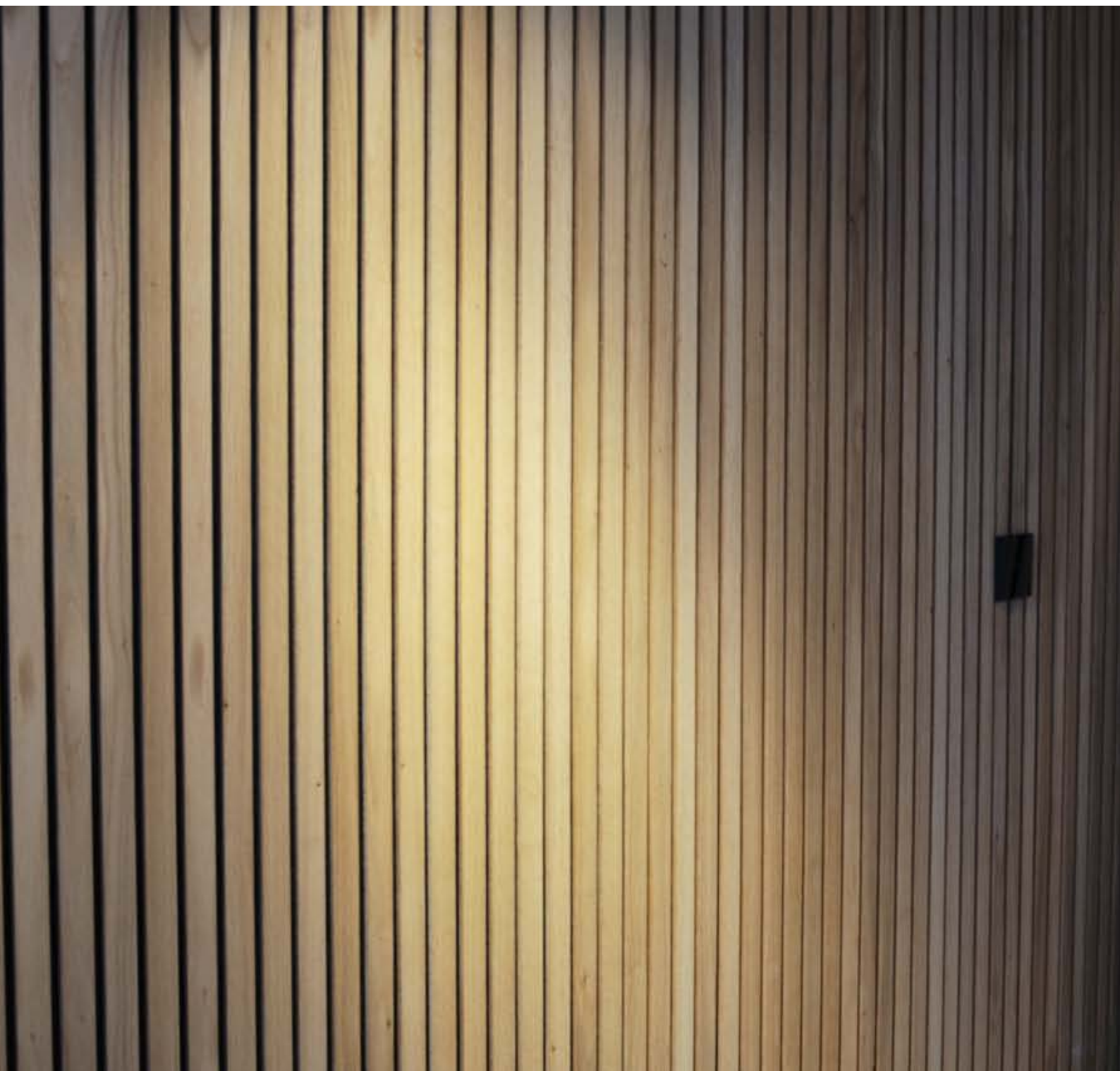
Surface material

MDF or Iroko or Oak (8mm)

Back material

PET acoustic panel (12mm)



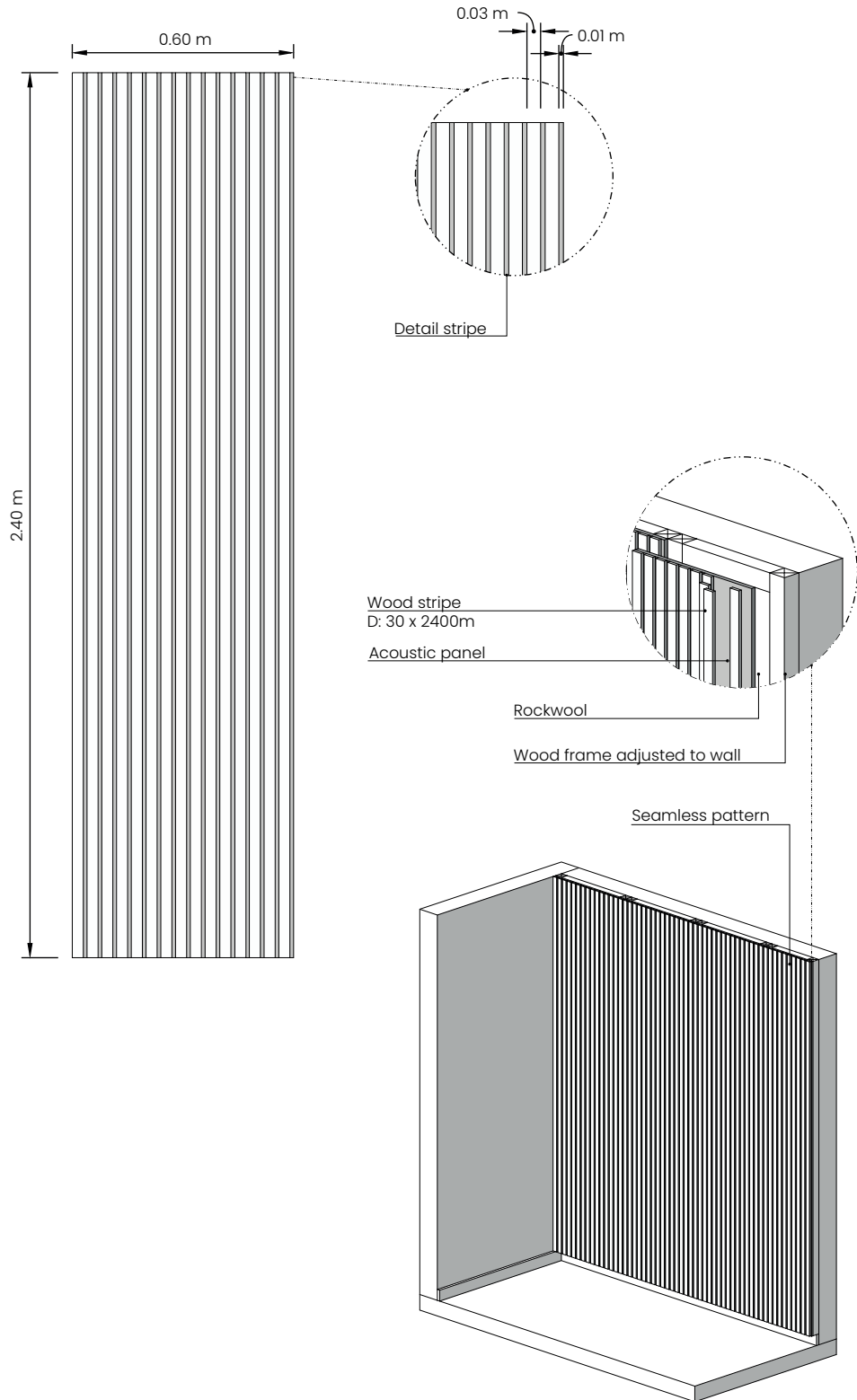


**STANDARD
DIMENSIONS
AND TYPES**

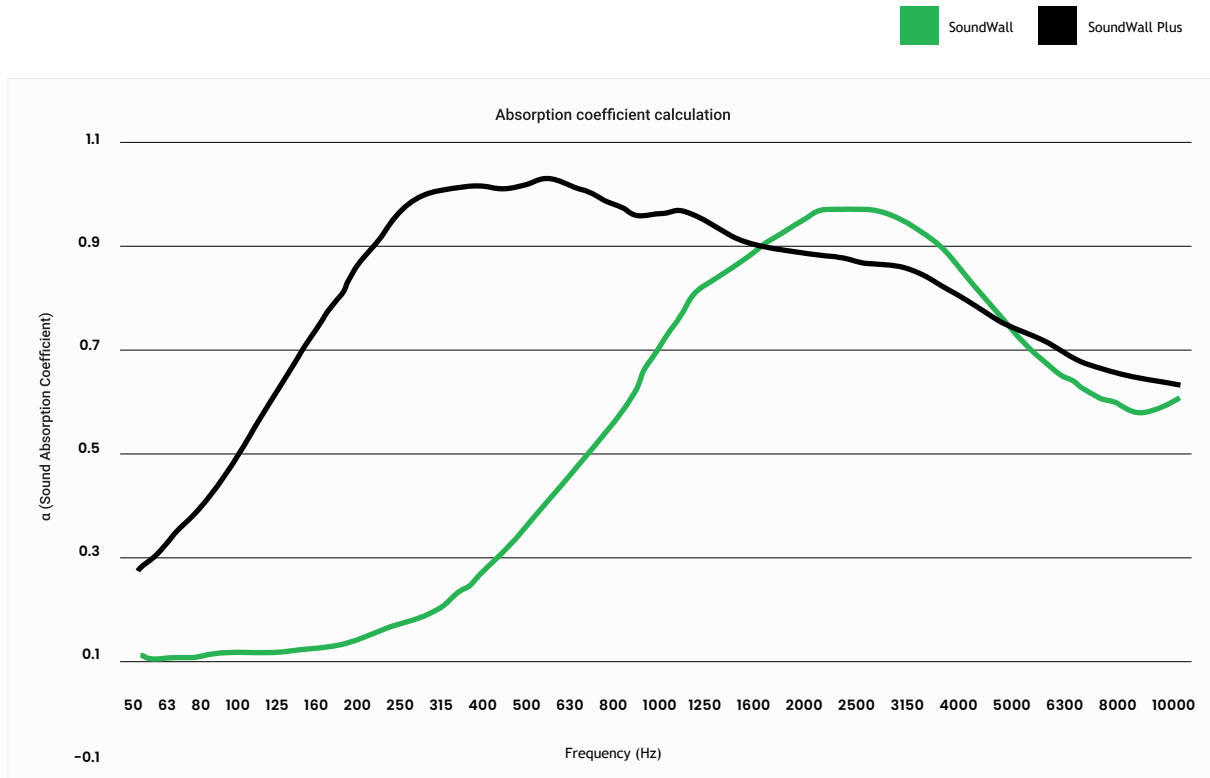
**SoundWall
PLUS**

Additional backing material
Mineral wool (50mm)

* Can also be customized
depending on the requirements
of each application.



SOUND ABSORPTION



SoundWall

Sound class D ($\alpha_w=0.45$)
[according to specialised
acoustic software]
(system total thickness 20mm)

SoundWall Plus

Sound class B ($\alpha_w=0.85$)
[according to specialised
acoustic software]
(with additional backing
material of mineral wool 50mm)

**SOUND
ABSORPTION**

| Frequency (Hz) | α random | | α random | |
|-------------------|-----------|------|----------------|------|
| | SoundWall | | SoundWall Plus | |
| 50 | 0.01 | | 0.19 | |
| 63 | 0.01 | 0.01 | 0.28 | 0.29 |
| 80 | 0.02 | | 0.41 | |
| 100 | 0.02 | | 0.56 | |
| 125 | 0.04 | 0.04 | 0.71 | 0.70 |
| 160 | 0.06 | | 0.84 | |
| 200 | 0.1 | | 0.95 | |
| 250 | 0.15 | 0.16 | 0.98 | 0.97 |
| 315 | 0.23 | | 0.97 | |
| 400 | 0.34 | | 1 | |
| 500 | 0.46 | 0.46 | 0.96 | 0.96 |
| 630 | 0.59 | | 0.92 | |
| 800 | 0.73 | | 0.93 | |
| 1000 | 0.8 | 0.80 | 0.88 | 0.89 |
| 1250 | 0.86 | | 0.85 | |
| 1600 | 0.93 | | 0.84 | |
| 2000 | 0.93 | 0.92 | 0.82 | 0.82 |
| 2500 | 0.89 | | 0.81 | |
| 3150 | 0.81 | | 0.76 | |
| 4000 | 0.7 | 0.71 | 0.7 | 0.71 |
| 5000 | 0.61 | | 0.66 | |
| 6300 | 0.56 | | 0.61 | |
| 8000 | 0.51 | 0.54 | 0.59 | 0.59 |
| 10000 | 0.54 | | 0.57 | |

